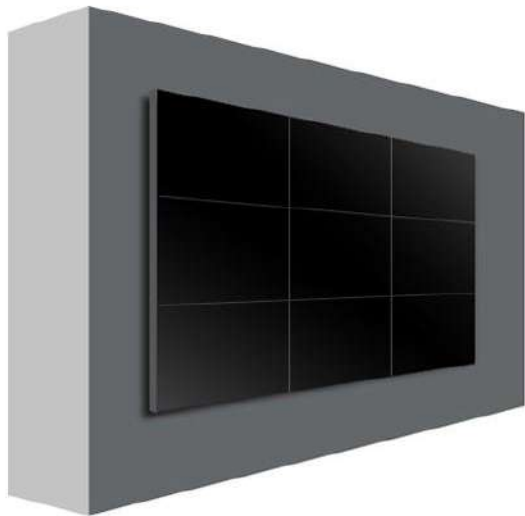


Features

- ❄ Super Narrow Physical Bezel
- ❄ Industrial-grade Screen with Stable Performance.
- ❄ Industrial A Grade LCD Panel with 24/7 working.
- ❄ Slim & Light Alloy metal Enclosure Black Color Design.
- ❄ 178 (H/V) Wide Viewing Angle.
- ❄ Intelligent Color and Brightness Adjustment.
- ❄ LED Backlight, Low Power Consumption.
- ❄ 3D Comb Filter Image Processing to Create Vivid Image.
- ❄ User-Friendly Monitor ID setting.
- ❄ Rich Signal Interface: HDMI/VGA/CVBS/DVI/USB/RS232/IR.
- ❄ Auto Temperature Calibration System.



Various Installion Types



Wall Mount Installation



Cabinet Installation



Floor Upstand Installation



Front Access Installation

SIMILAR PROJECTS DONE BY SPARSA



| | | | | |
|--------------------------------------|--|---|-------------------------|--|
| LCD Panel | Diagonal Size | 49-inch | 55-inch | |
| | Panel Brand | LG Original Panel | | |
| | Panel Technology | IPS | | |
| | Viewing Angle | 178° (H)/178° (V) | | |
| | Brightness | 500 Nit (Typ) / 700 Nit (Typ) | | |
| | Display Area | 1077.6 mm(H) x 607.8mm(V) | 1213.4mm(H) x 684mm (V) | |
| | Aspect Ratio | 16:9 | | |
| | Contrast Ratio | 1300 : 1 | | |
| | Response Time | ≤8ms(Gray to Gray) | | |
| | Physical Resolution | 1920 × 1080(FULL HD) | | |
| | Display Colors | 1.07 Billion colors (10Bit) | | |
| | Bezel to Bezel | 3.5mm | 3.5mm/1.8mm/0.88mm | |
| | Working Time | 7 x 24 hours | | |
| | MTBF | ≥60,000 hrs | | |
| Built-in Signal Controller Interface | HDMI Input | 1 x HDMI | | |
| | DVI Input | 1 x DVI | | |
| | VGA Input | 1 x VGA | | |
| | CVBS | 1 x CVBS IN /1x CVBS OUT | | |
| | RS232 Input / Output | 1* RS232 Input,1* RS232 Output | | |
| | IR | 1* IR receiver, support remote controller | | |
| | Language | Multiple Language Interface | | |
| | Optional Input | DP Daisy Chain Connection | | |
| General | Bracket Type | rear access/front access/floor upstanding/curved design | | |
| | Hander | Left / right handle | | |
| | Enclosure | Black color full metal enclosure with Anti static, anti magnetic field, anti strong electric field interference | | |
| | Power Supply | 110v ~ 240V 50Hz / 60Hz | | |
| | Working Temperature | 0°C ~50 °C | | |
| | Operating Temperature | 0°C ~ 40°C | | |
| | Operating Humidity | 10%-80% (Non-condensing) | | |
| | Storage Temperature | -20°C~ 60°C | | |
| | Storage Humidity | 5%-90% (Non-condensing) | | |
| Function | 3D comb image flitter, smart temperature calibration, remotely set screen ID at software, various signal interface | | | |

Specifications are subject to change without prior notice

